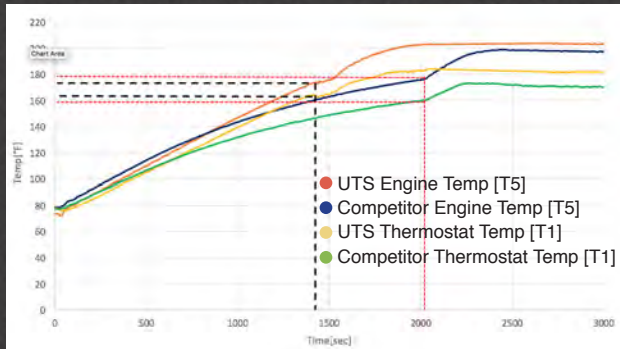


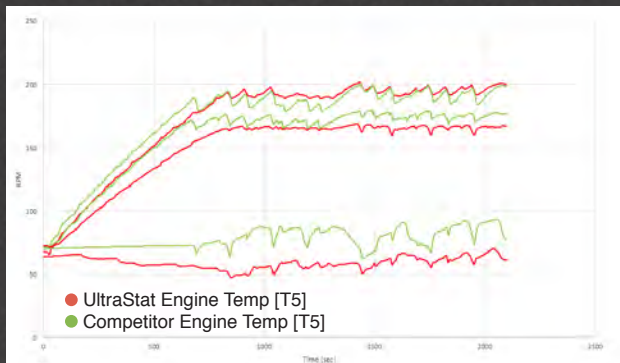
## We Put It To The Test

### Idle Test [800 rpm] UltraStat VS Competitor



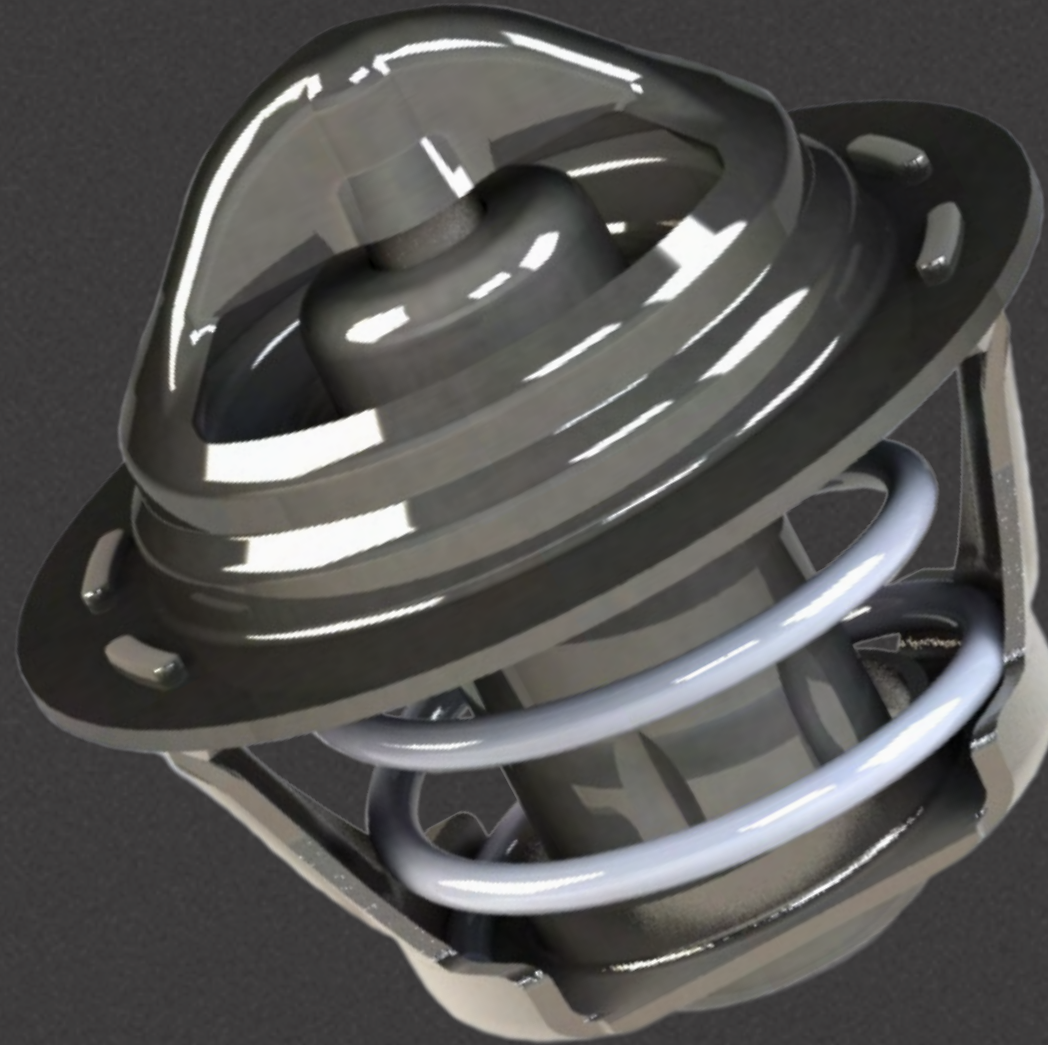
*UltraStat not only delivers a more effective time to warm the cabin interior, but it also reduces radiator thermal shock for a smoother transition at the warm-up point.*

### Profile Driving Test UltraStat VS Competitor



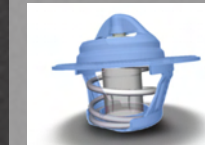
*In addition to a faster warm-up time, UltraStat temperature stays consistent throughout RPM during the profile driving test.*

# ULTRASTAT

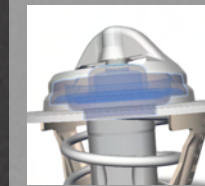


## Durability And Reliability

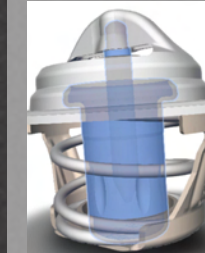
Here is how UltraStat offers more than the competition.



**Heavier Gauge Components:** Offer Increased Reliability and Long-Lasting Durability



**Exclusive BLVT™ Valve Technology:** Prevents Thermal Shock to Cooling System Components



**Stainless Steel Thermal Element:** For Unmatched Corrosion Resistance And Revolutionary Reax™ Wax Mixture Provides Quicker Reaction Time



**AccuSpring™ Design:** For Stable Temperature Control And Increased Cabin Comfort